

State of Wyoming Corner Record

(In compliance with the *CORNER PERPETUATION AND FILING ACT*, Wyoming Statutes, 1997, Section 33-29-140, et. seq., and the Rules and Regulations of the Board of Registration for Professional Engineers and Professional Land Surveyors)

Reverse side of this form may be used if more space is needed.

Record of original survey and citation of source of historical information (if corner is lost or obliterated). Description of corner monumentation evidence found and/or monument and accessories established to perpetuate the location of this corner. Sketch of relative location of monument, accessories, and reference points with course and distance to adjacent corner(s) (if determined in this survey). Method and rationale for reestablishment of lost or obliterated corner.

G.L.O. Record: Not applicable

Set: Witness Corner to Section Corner common to Sections 4,3,9,10. From the corner common to Sections 4,3,9,10 and at a point 1000.00 feet west, on the section line, between the found and accepted monument west, I set a 2 ½ ins. diam. aluminum pipe, 30 ins. long, 27 ins. in the ground with a 3 ¼ ins. aluminum cap marked as noted below. Set a 1 x 1 x 2 ins. orange flourescent magnetic module in the bottom of the monument hole. At the request of the landowner I did not set a steel fence post witness.

Aluminum Cap Markings
 T12N R67W
 1000' →

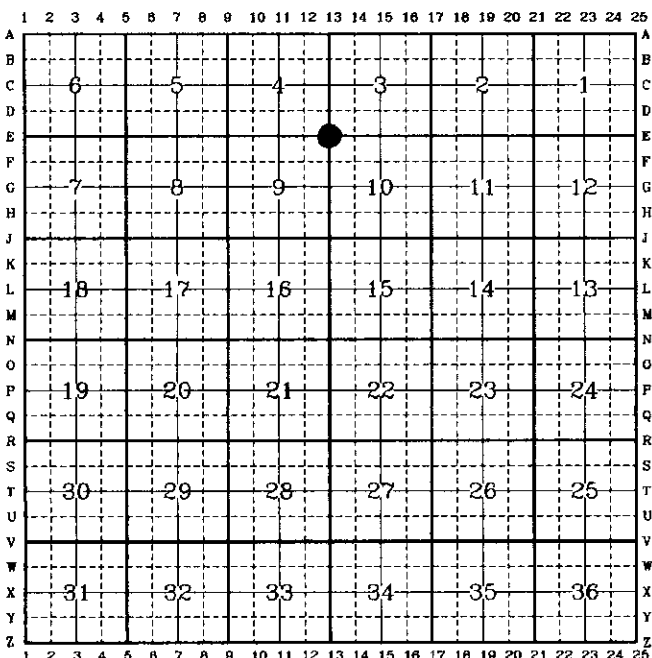
S4	S3
WC	S10
1999	
P.L.S. 2927	

See back of this sheet for measurements to other found or set monuments in the area.

Date of Field Work: March 9, 1999

Office Reference: A.V.I. Job No. 2085C

CROSS INDEX DIAGRAM

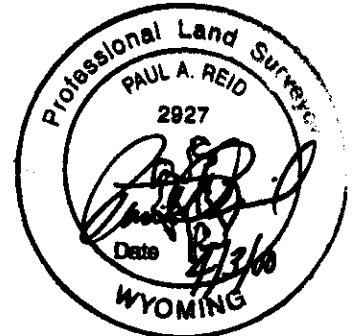


Firm/Agency, Address
 Paul A. Reid, P.L.S.
 A.V.I., p.c.
 2035 Westland Road
 Cheyenne, WY 82001

Telephone Number:
 (307) 637-6017

This corner record was prepared by me or under my direction and supervision.

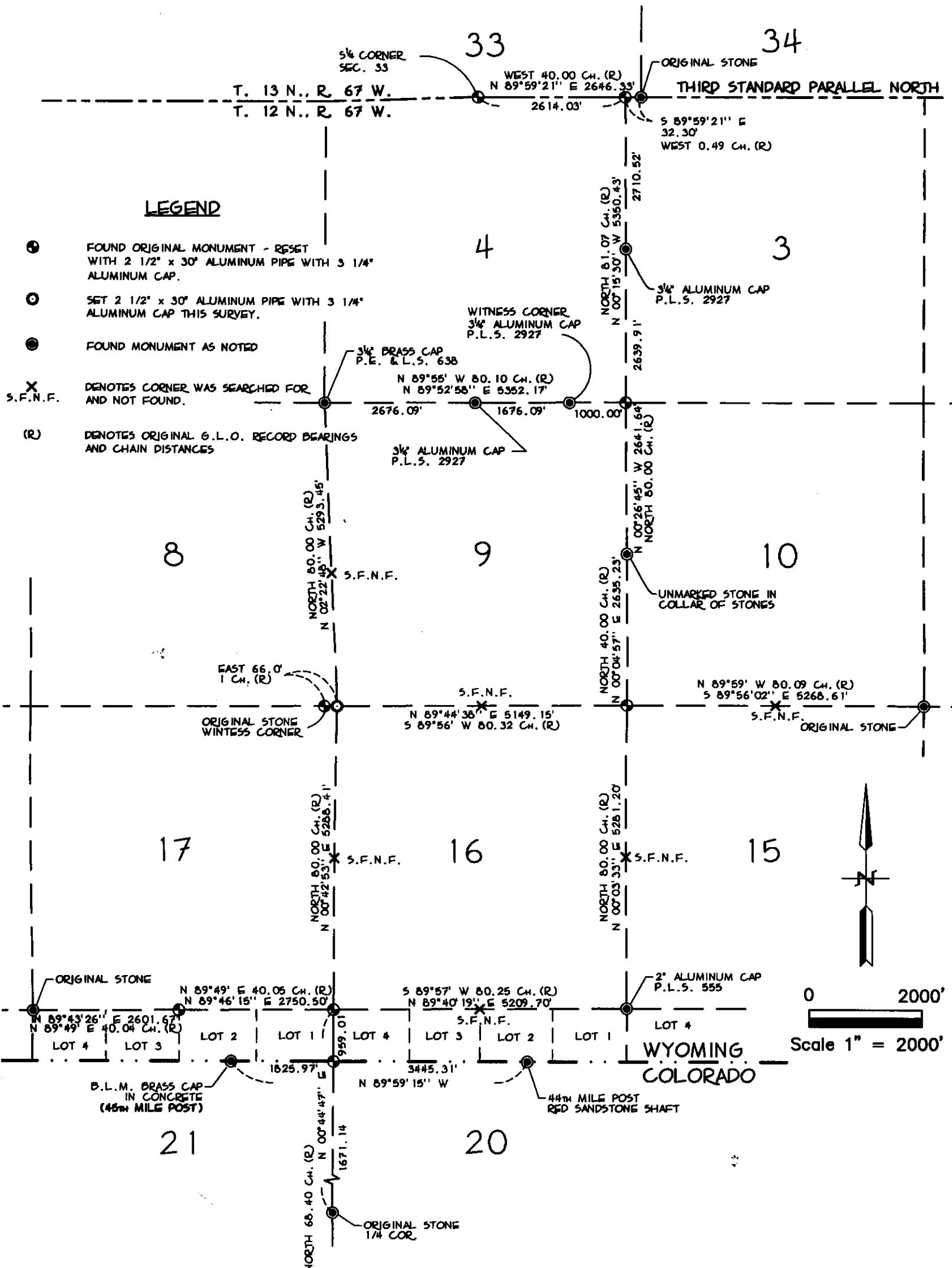
SEAL & SIGNATURE



Corner Name: WC to SW Cor
 SBRPEPLS/PLSW:March 1994

Section: 3

T.12N., R.67W.; 6th P.M. Cross-Index No.: E-13



SKETCH OF SURVEY
 T. 12 N., R. 67 W., 6th P.M.
 LARAMIE COUNTY, WYOMING